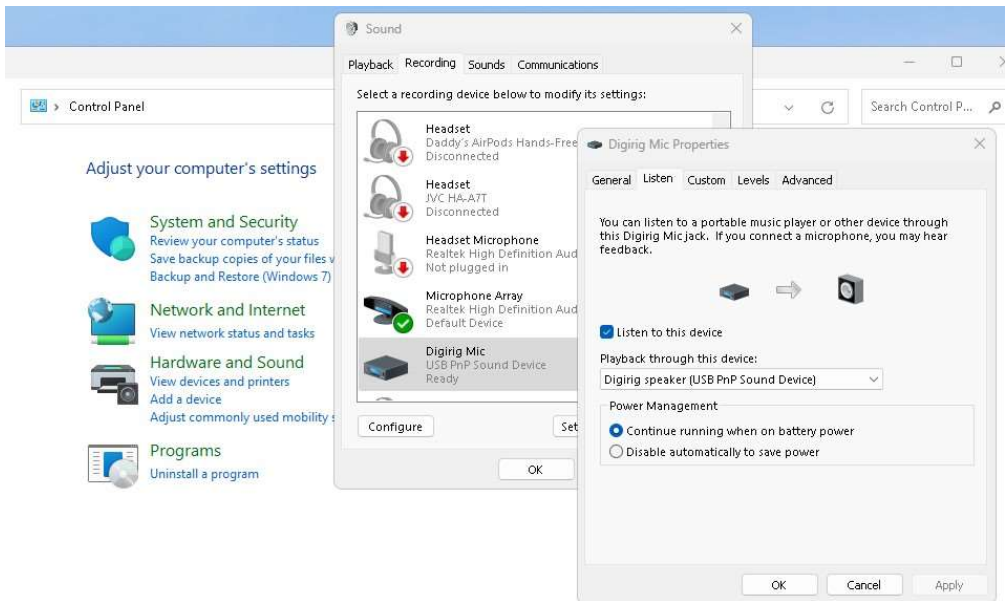
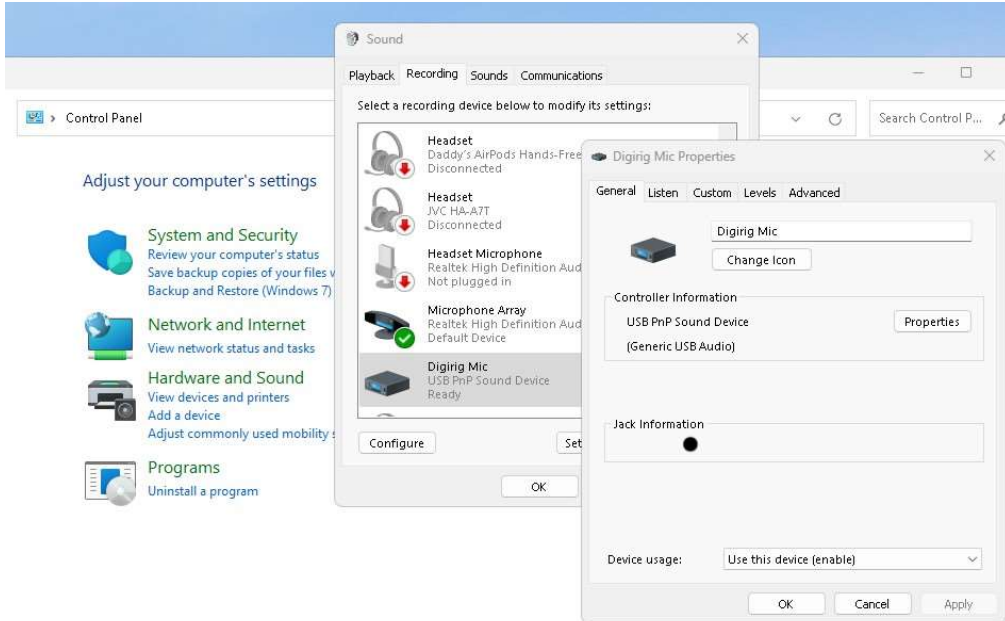


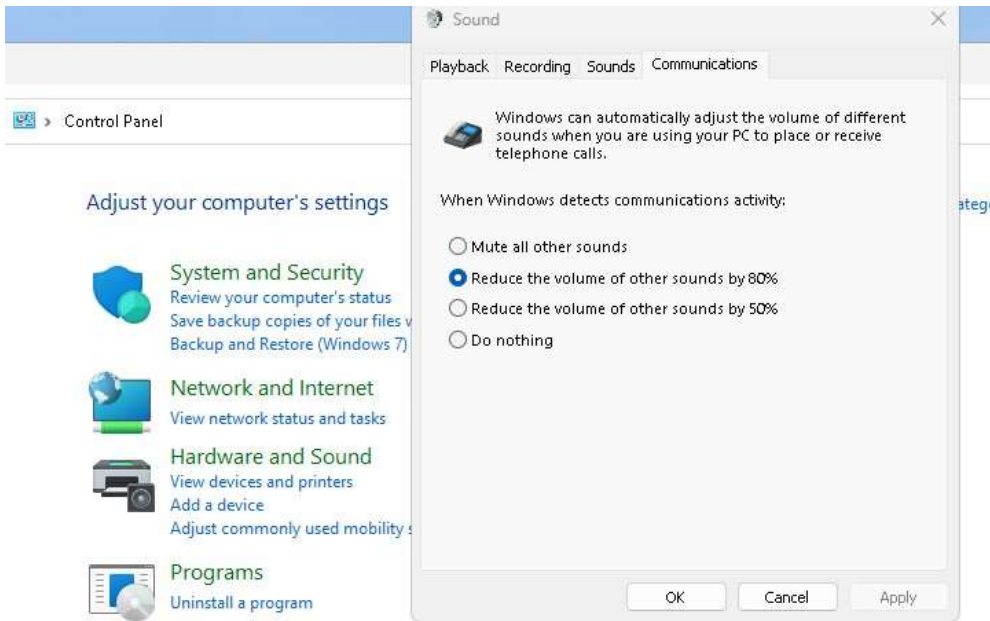
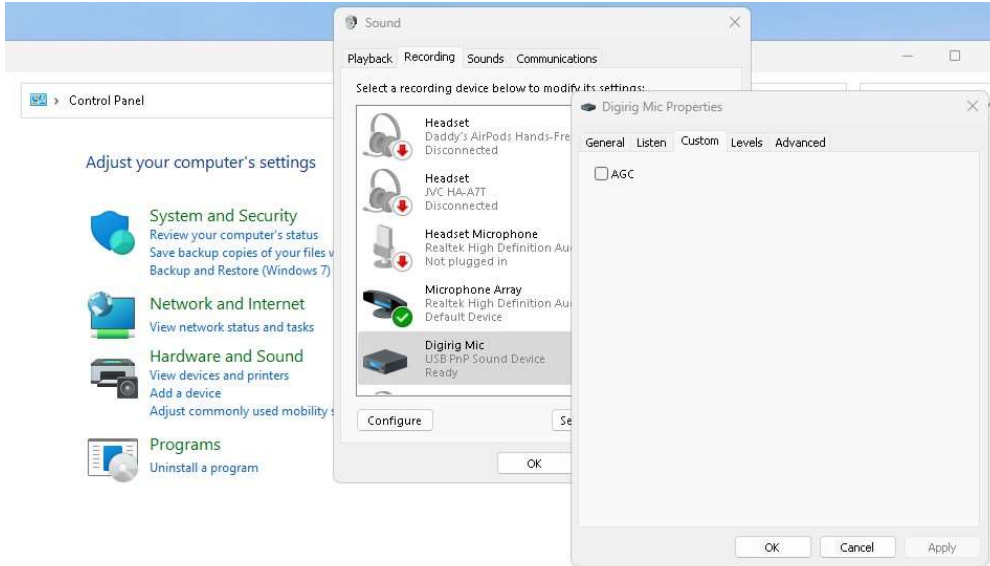
FTM-300DR / WINLINK CONFIGURATION

WINDOWS CONFIGURATION

1. Goto Settings, Control Panel, Hardware and Sound, Manage audio devices, recording
2. Goto the GENERAL tab, change the setting to the examples below



FTM-300DR / WINLINK CONFIGURATION

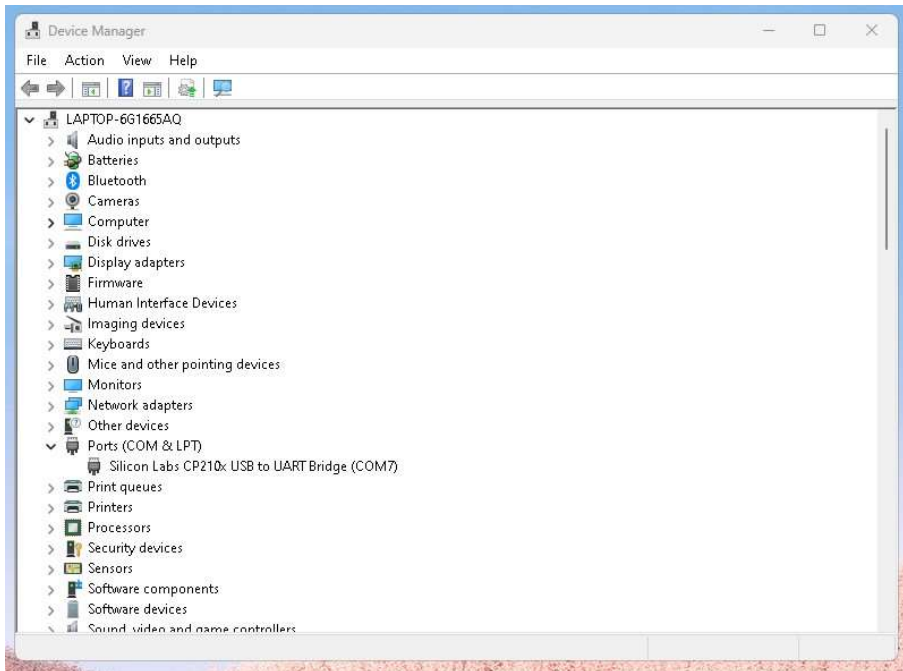


FTM-300DR / WINLINK CONFIGURATION

COM PORT NUMBER

NOTE: You will need it when you do your Sound Modem settings. Write down your COM#

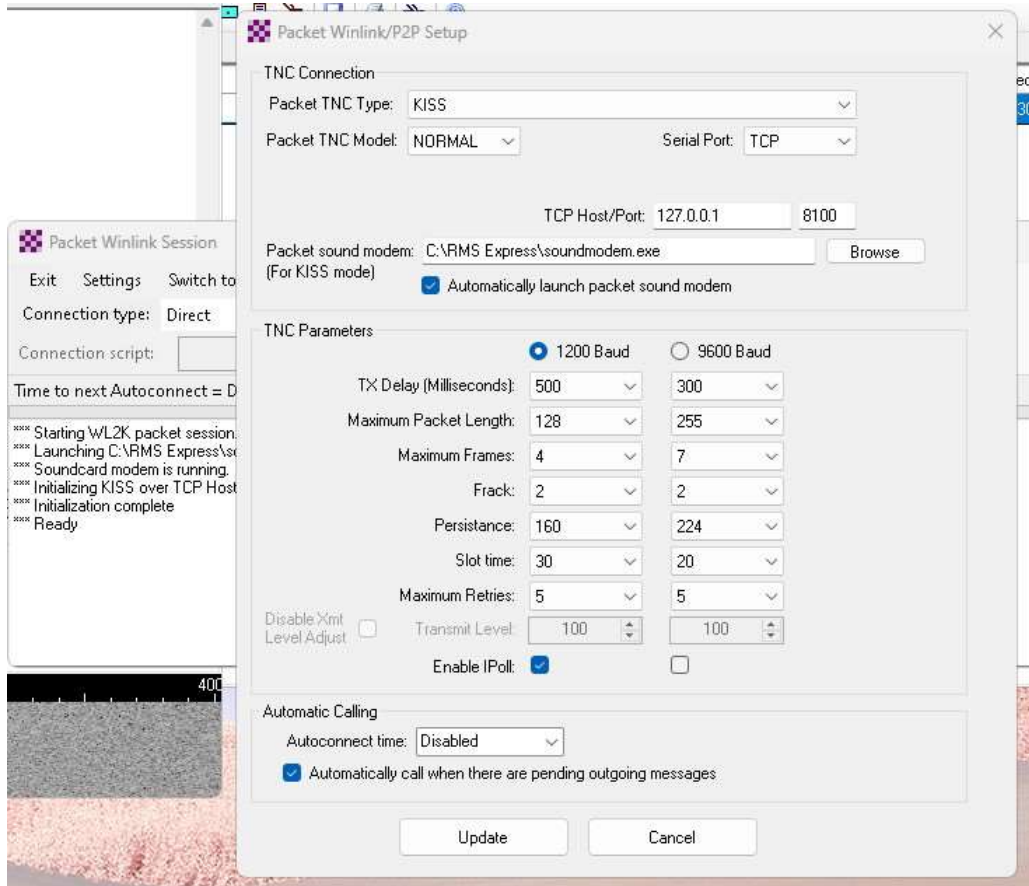
3. Goto **SETTING**, Type in the search “device manager”, hit **ENTER**
4. Click on “**Ports (COM & LPT)**”



FTM-300DR / WINLINK CONFIGURATION

PACKET WINLINK SESSION

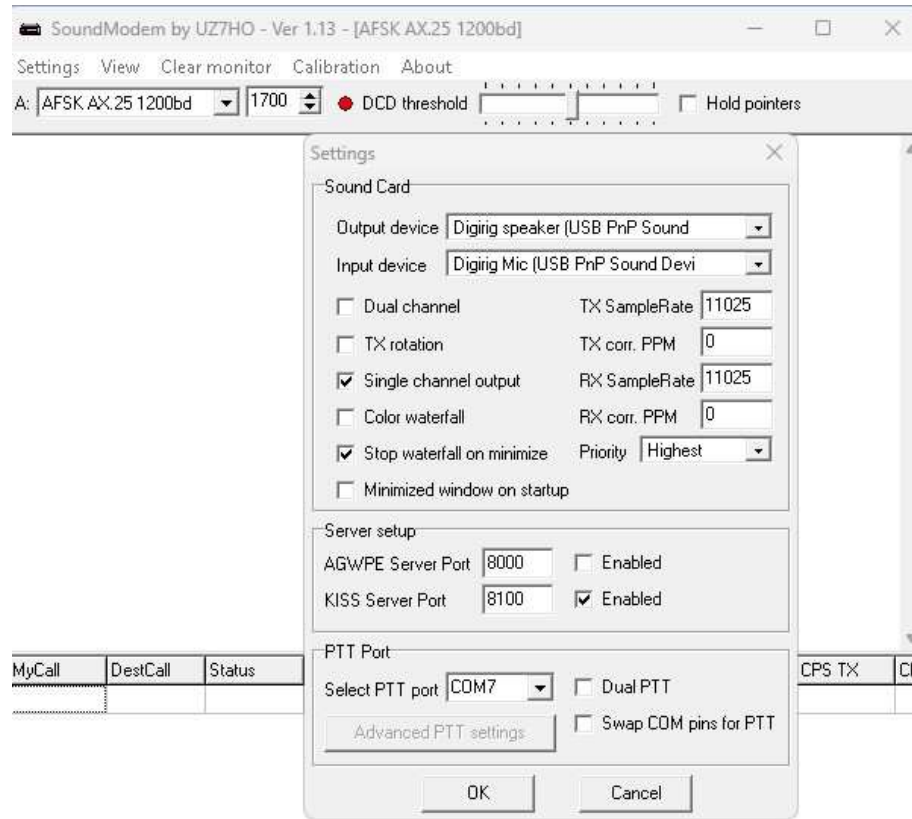
1. Click on **SETTINGS**
2. Follow the example below



FTM-300DR / WINLINK CONFIGURATION

SOUND MODEM

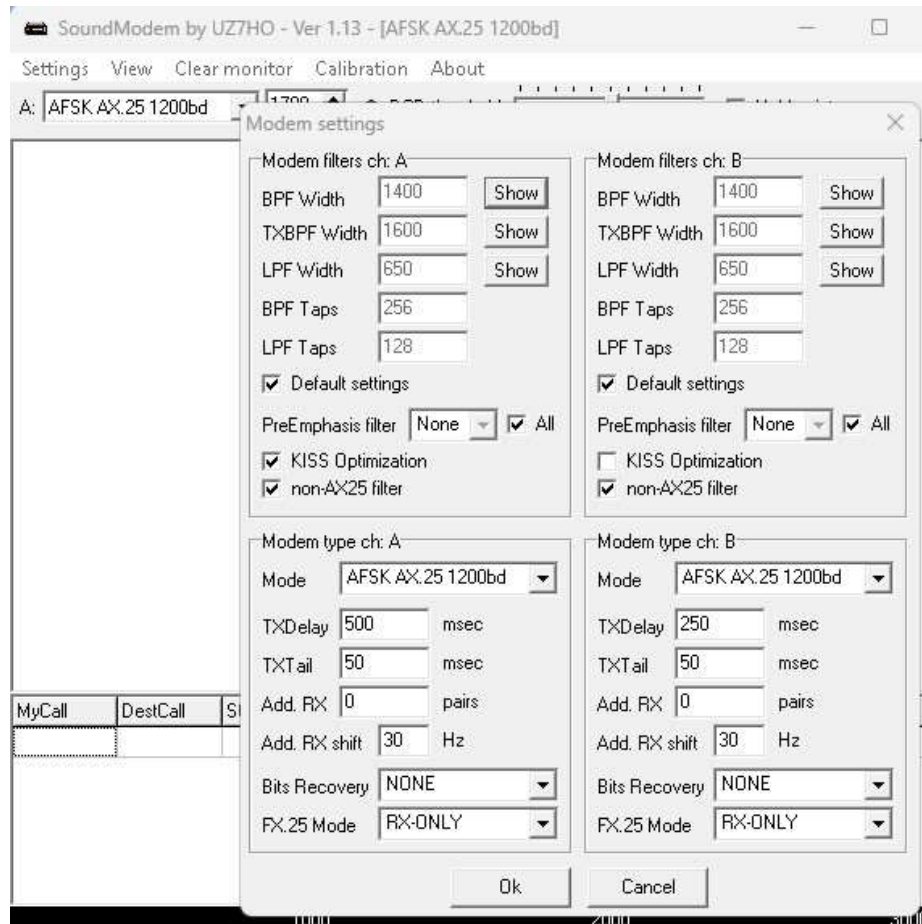
1. Click on **SETTINGS, DEVICES**



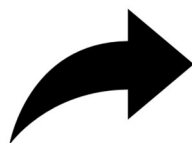
NOTE: Change the "Select PPT Port" to your COM#

FTM-300DR / WINLINK CONFIGURATION

2. Click on SETTINGS, MODEM



Now you have completed the setup for your Radio and Winlink.



NOTE:

1. You will need to use a FTM-300dr CAT CABLE to make this work.
2. An external device like Digirig mobile will operate on BAND B as that is the default DATA BAND.
3. Yaesus Support stated that you can in the DATA sub-menu change it to BAND A if you choose to, but it must be set to either A or B. I have tested setting your DATA to A and it did not work, I had to go back to B to get it to work correctly.

By Cecil W. Thorn KM4VRZ